

Temperature Transmitter Series TT55

FEATURES

- Stainless steel design
- Standard accuracy 1/3DIN
- Hygienic process connection
- 4-20mA, Hart protocol, Profibus PA Output
- Intrinsic safe

TYPICAL USES

- Oil & Gas
- Chemical
- Power
- Food & Beverage
- Pharmaceutical



TT55

TECHNICAL SPECIFICATIONS

Accuracy :	0.1 % (Optional 0.075 %)
Output :	4-20mA, 2wire Hart protocol Profibus PA
Power Supply :	12 - 36 Vdc (ATEX: 12 - 30 Vdc)
Adjustment	By button , H.H.T or PC
Display	Multilingual, with bargraph, backlight
Sensor Type :	Pt 100, 3wire 1/3DIN class B -50 °C...+200 °C
Sheath Diameter:	6mm, 8mm, 9mm
Sheath Length:	50 to 1000 mm
Protection Class :	IP66
Process Connection :	G1/2" G1" Tri-clamp® Milkcoupling (DIN11851) Varivent®
Electrical Connection :	PG gland

WETTED PARTS

316 SS

NON WETTED PARTS

Housing : 304 SS
316 SS

ENVIRONMENTAL SPECIFICATIONS

Temperature Limits:
Ambiant : -20...+80°C

APPROVALS

ATEX Exia II CT4

KEY BENEFITS

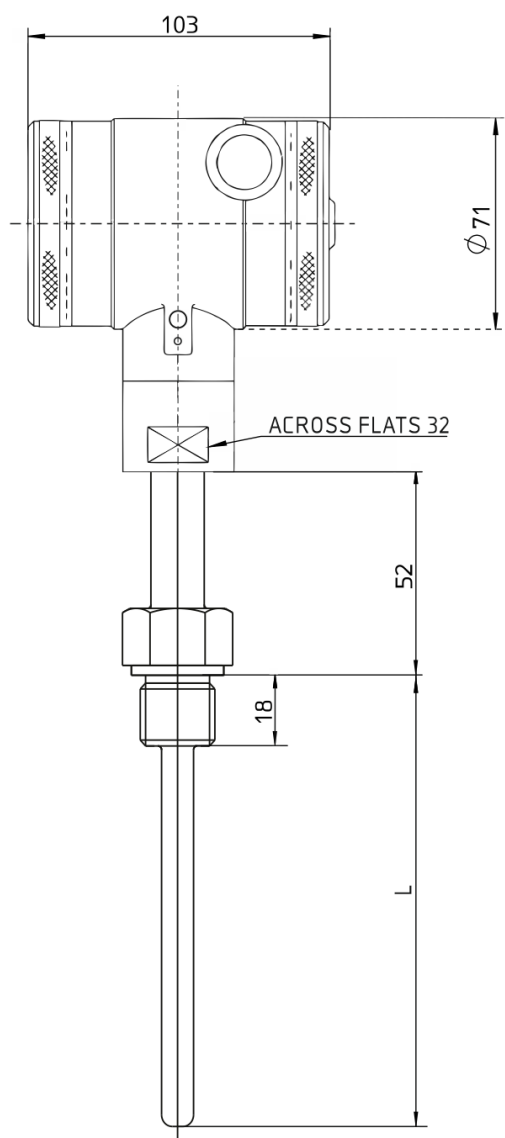
- Microprocessor based
- Unique control button and display
- Adjustable damping
- Graphic display with bargraph and backlight

Data Sheet

Temperature Transmitter Series TT55

DIMENSIONS (mm)

For reference only, consult Ashcroft for specific dimensional drawings



Temperature Transmitter Series TT55

ORDERING CODE		EXAMPLE:	TT55	7	GV	L150	N	D6	HA	P5	C4
Model											
TT55	Temperature Transmitter										
Accuracy											
10	0.1%										
7	0.075%			7							
Process Connection											
GV	G1/2" fixed nipple				GV						
GO	G1/2" turning nipple										
O	G3/4" coupling nut										
S	G1" Sanitary connection (male)										
M25	Milk coupling DN 25 (DIN11851)										
M40	Milk coupling DN 40 (DIN11851)										
M50	Milk coupling DN 50 (DIN11851)										
L15	Tri-clamp @ 1½"										
L20	Tri-clamp @ 2"										
X4	Varivent®										
X	Special connection										
Sheath Length											
L	length probe in mm.					L150					
Lag Length											
N	No						N				
E...	Extra Extension between housing and process connection										
Sheath Diameter											
D6	6 mm (straight)							D6			
D8	8 mm(straight)										
D9	9 mm (straight)										
D96	9 mm, with reduced tip 6 mm Other										
D..	diameter (specify)										
Output											
42	4-20mA										
HA	Hart® protocol								HA		
EX	Intrinsic safe										
PA	Profibus PA (Not available in Ex)										
Options											
P5	Insertion out of Bar Stock									P5	
YW	316L housing										
NH	Stainless steel tagging wired										
Approval											
C4	Calibration certificate										C4